

I am satisfied with the overall environment of the college.
I am satisfied with the infrastructure of the college and hostels.
College authorities have fully explained the course outcome, program outcome and program specific
College authorities have explained thoroughly regarding the examination process.
I am fully satisfied with the assessment criteria of the college and University.
College authorities are explaining the process of form fill up.
College authorities have well informed and formulated grievance handling policies.
College authority has well-informed and maintained feedback system
College authorities serve every notice in time.
Teachers are always available on phone outside the class hour.
I am satisfied with the teacher as they are communicating with us well.
I am satisfied with the way of teaching
During teaching, faculties are using ICT tools during class.
Teachers and college authorities are treated us with respect.
During class the teachers are giving practical examples
Teachers serious enough to identify and solve the problems of the slow learners by arranging remedial
Teachers are taking special class on regular basis.
Teachers are serious about curricular and co curricular activities of every student.
College authorities have zero tolerance towards ragging.
Libraries have enough number of books.
We are getting enough number of teaching materials for every subject of every course.
College is serious enough to increase the soft skills of students.
College authorities are serious on the extracurricular activities of every student.
College authorities are always encouraging and providing information on add on enrichment courses.
College authorities are arranging field visit on regular basis.
College authorities are arranging special classes where industry people are coming and giving lectures.
College authority is serious enough to communicate with the guardians.
Provision of accommodation by the college authority is satisfactory.
College authorities are arraigning sports day and different cultural events on regular basis.
College authority have good communication with the Alumni
Placement department is serious enough to place every student.

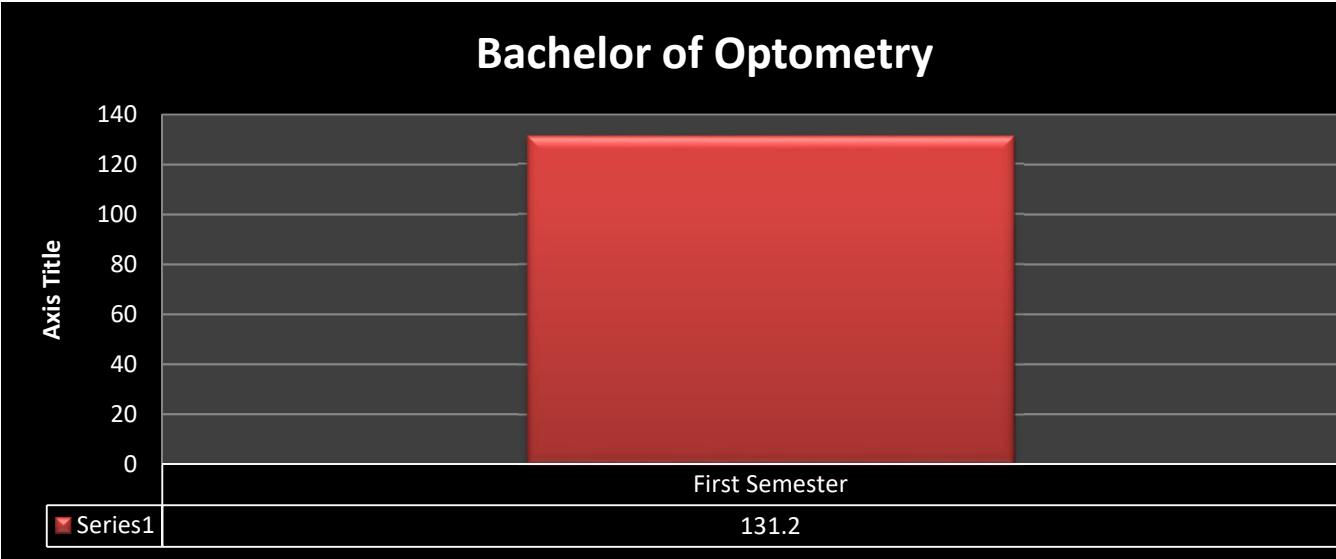
	Year	Semester	Q1	Q2	Q3	Q4	Q5
<b>Bachelor of Optometry</b>	<b>First</b>	<b>First</b>	<b>3.9</b>	<b>3.6</b>	<b>4.1</b>	<b>4.3</b>	<b>4.1</b>
<b>B.Sc in Gaming &amp; Mobile Application Development</b>	<b>First</b>	<b>First</b>	<b>4.3</b>	<b>3.9</b>	<b>4.3</b>	<b>4.5</b>	<b>4.4</b>
<b>Bachelor of Business Administration</b>	<b>First</b>	<b>First</b>	<b>4.1</b>	<b>4.4</b>	<b>4.3</b>	<b>4.5</b>	<b>4.5</b>
<b>Bachelor of management Studies (Pharmaceutical Management)</b>	<b>First</b>	<b>First</b>	<b>4.5</b>	<b>4.2</b>	<b>4.3</b>	<b>4.1</b>	<b>4.5</b>
	<b>Second</b>	<b>Third</b>	<b>4.1</b>	<b>4</b>	<b>4.2</b>	<b>3.7</b>	<b>3.9</b>
<b>BBA in Hospital Management</b>	<b>First</b>	<b>First</b>	<b>4.2</b>	<b>4.5</b>	<b>4.7</b>	<b>4.5</b>	<b>4.6</b>
	<b>Second</b>	<b>Third</b>	<b>4</b>	<b>4.1</b>	<b>3.9</b>	<b>3.8</b>	<b>3.9</b>
	<b>Third</b>	<b>Fifth</b>	<b>4.2</b>	<b>4.5</b>	<b>3.9</b>	<b>4.1</b>	<b>4.2</b>
<b>Masters of Hospital Administration</b>	<b>First</b>	<b>First</b>	<b>4.3</b>	<b>4.6</b>	<b>4.6</b>	<b>4.5</b>	<b>4.7</b>
	<b>Second</b>	<b>Third</b>	<b>4.2</b>	<b>4.4</b>	<b>4.3</b>	<b>4.7</b>	<b>4.6</b>
<b>Masters of Management Studies in Pharmaceutical Management</b>							
	<b>First</b>	<b>First</b>	<b>4.3</b>	<b>4.2</b>	<b>4.5</b>	<b>4.7</b>	<b>4.2</b>
<b>Total</b>			<b>4.18</b>	<b>4.22</b>	<b>4.26</b>	<b>4.27</b>	<b>4.34</b>

Q6	Q7	Q8	Q9	Q10	Q11	Q12	Q13	Q14
4.5	4.2	4	4.2	3.9	4.1	4.5	4.7	4.3
4.1	3.9	4.1	4.2	4.1	4.2	4.3	4.5	4
4.3	4.4	4.3	4.5	4.5	4.3	4.4	4.5	4
4.7	4.5	4.6	4.1	3.9	4.1	3.9	4.5	4.6
3.7	3.8	4.1	4	4.1	4.2	4.1	4.1	4.2
4.2	4.3	4.1	4.2	4.5	4.5	4.2	4.3	3.9
4.1	4.2	4	4.5	4.3	4.2	4.5	4.3	4.2
4.1	3.9	3.8	4.5	4.4	4.3	4.3	4.4	4.3
4.3	4.4	4.5	4.5	4.7	4.6	4.3	4.1	4.4
4.1	4.1	4.3	4.6	4.7	4.3	4	4.2	4.1
4.4	4.6	4.3	4.5	4.6	4.4	4.3	4.1	4.2
4.21	4.17	4.18	4.33	4.31	4.28	4.25	4.36	4.2

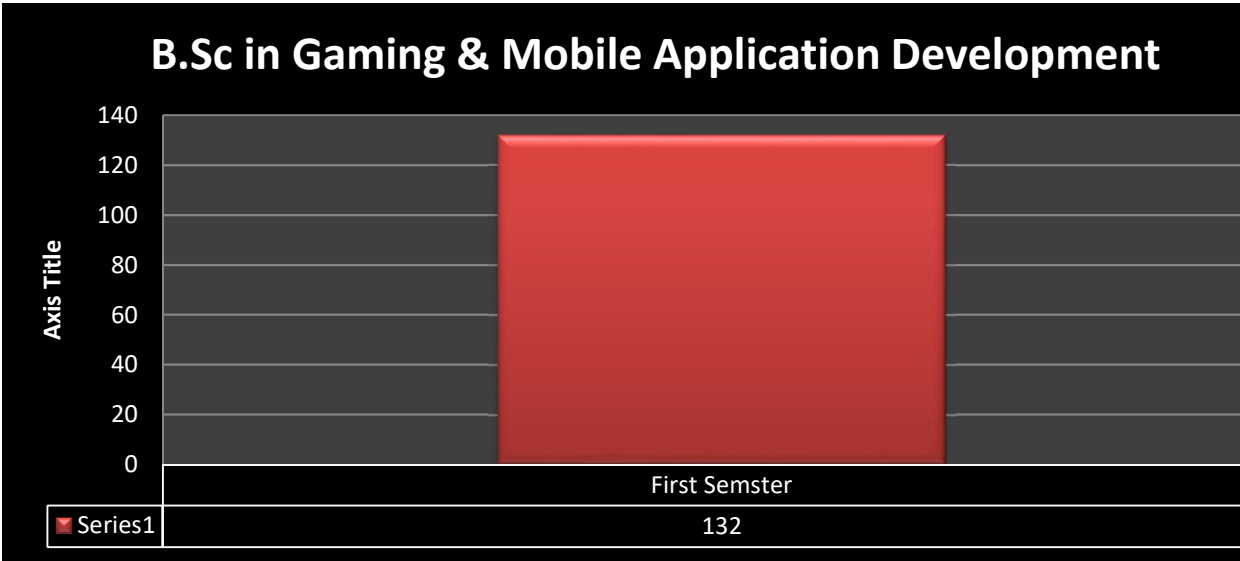
Q15	Q16	Q17	Q18	Q19	Q20	Q21	Q22	Q23
4.5	4.1	4.3	4.2	4.5	4.1	4.2	4.4	4.5
4.1	4	4.5	4.1	4.4	4.7	4.5	4.3	4.5
4.4	4.2	4.3	4.5	4.7	4.5	4.5	4.6	4.5
4.3	4.3	4.1	4	4.5	4.6	4.1	4.7	4.2
4	3.9	3.6	4.1	4.2	4.1	4.2	4.3	4.3
4.01	4.5	4.7	4.5	4.3	4.1	4.5	4.4	4.6
3.9	4	4.1	4.3	4.1	4.5	4.2	4.4	4.6
4.6	4.5	4.1	4.2	4.3	4.5	4.1	3.9	3.8
4.3	4.5	4.1	4.2	4.4	4.6	4.7	4.3	4.8
4	4.4	4.1	4.3	4.2	4.5	4.3	4.2	4.1
4.5	4.7	4.3	4.2	4.5	4.1	4.5	4.7	4.4
4.211	4.24	4.19	4.24	4.36	4.42	4.33	4.35	4.39

Q24	Q25	Q26	Q27	Q28	Q29	Q30	Q31	Total
4.2	4.3	4.4	4.5	4.1	3.9	4.1	4.5	131.2
4.3	4.5	4.5	4.2	4.1	4.2	4.1	4.2	132
4.6	4.3	4.4	4.4	4.2	4.5	4.7	4.2	136.5
4.3	4.1	4.1	4.1	4.5	4.7	4.8	4.5	134.4
4.5	4.1	4.1	4.2	4	3.9	4.3	4.1	126.1
4.2	4.3	4.1	4.5	4	4.1	4.5	4.5	134.51
4	3.9	3.8	4.1	3.7	4.1	4.4	4.5	128.6
3.6	4.1	4.01	4.12	4.25	4.1	4.4	4.3	129.78
4.7	4.5	4.6	4.7	4.5	4.7	4.5	4.4	139
4	3.9	4.1	4.6	3.9	4.3	4.7	4.2	132.4
4.5	4.6	4.5	4.5	4.7	4.4	4.5	4.3	137.2
4.24	4.2	4.211	4.342	4.125	4.25	4.45	4.34	

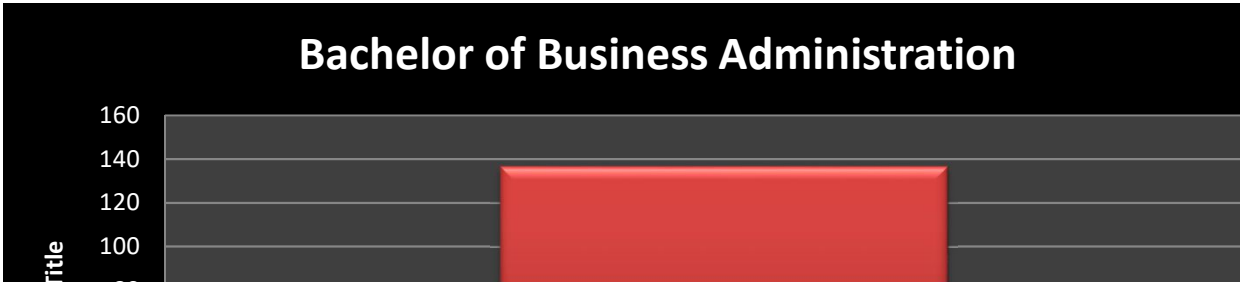
Bachelor of Optometry	First Semester	131.2
-----------------------	----------------	-------

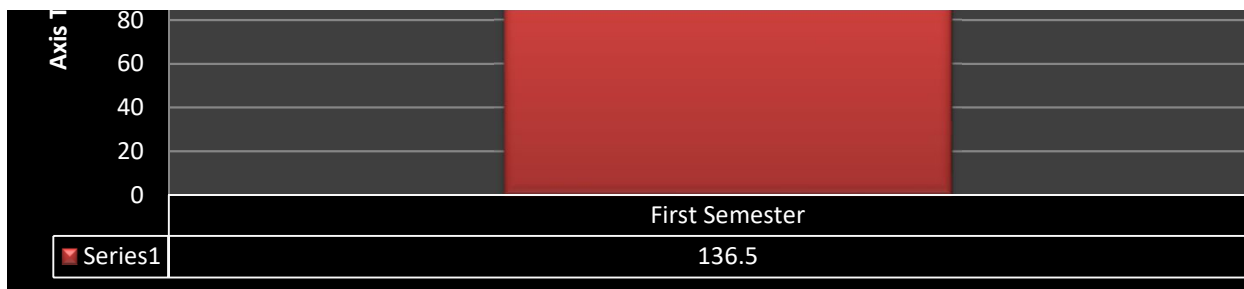


B.Sc in Gaming & Mobile Application Development	First	First Semester	132
---	-------	----------------	-----

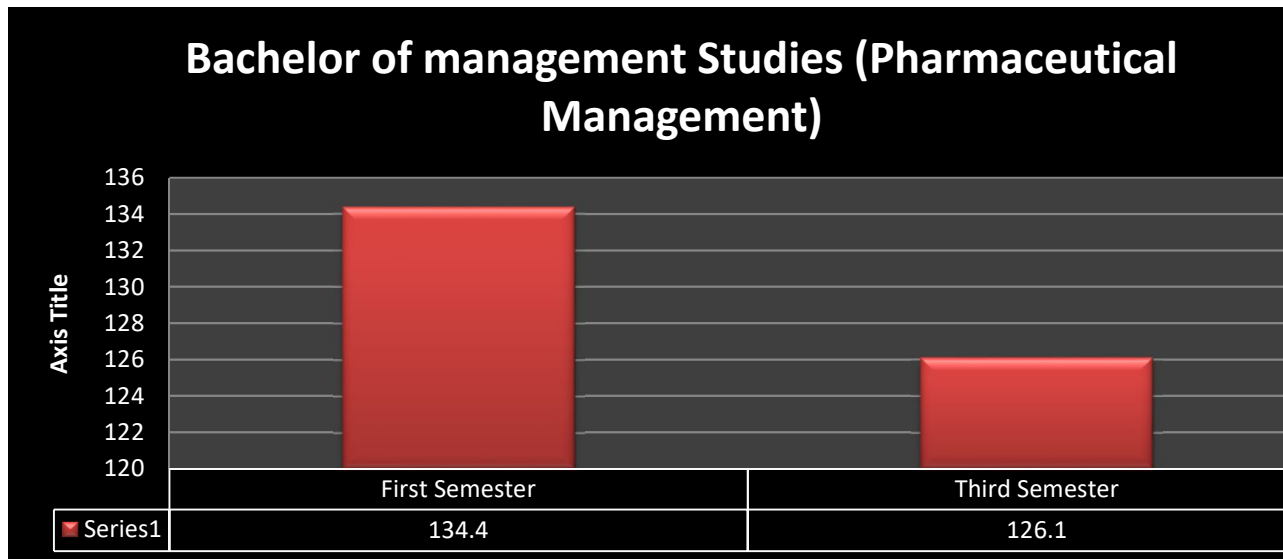


Bachelor of Business Administration	First	First Semester	136.5
-------------------------------------	-------	----------------	-------

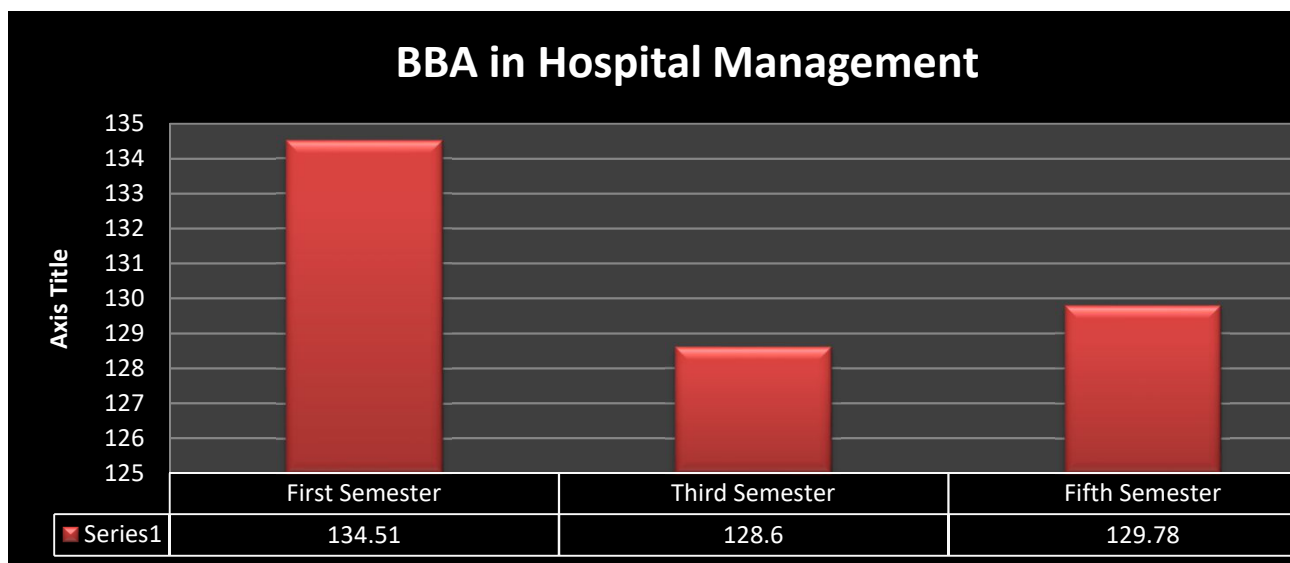




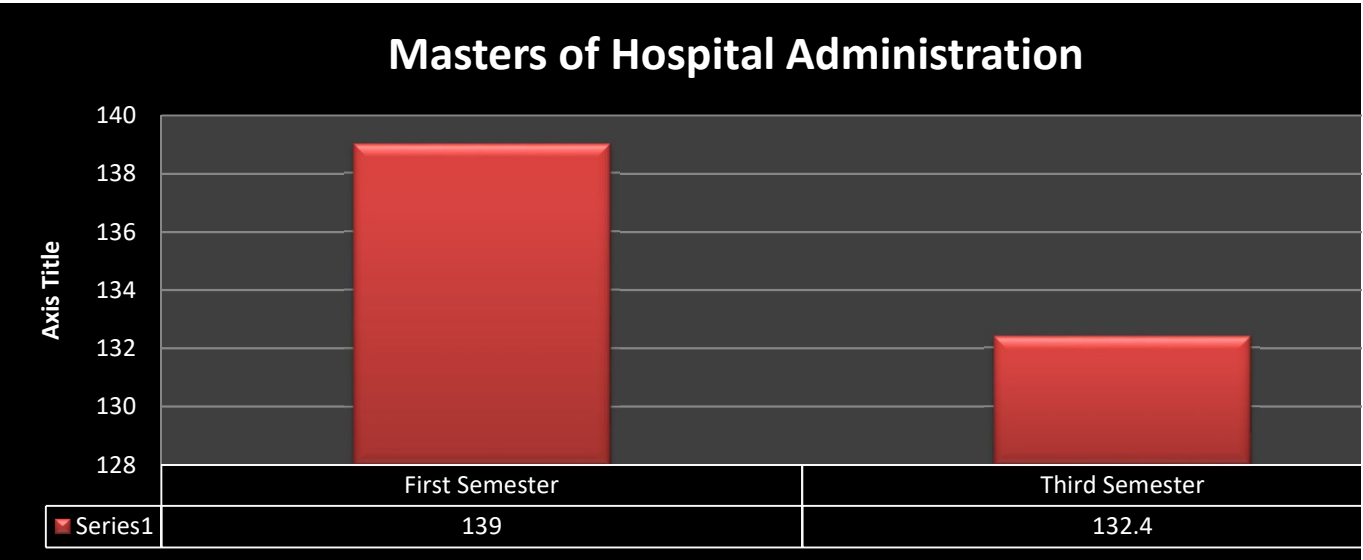
Bachelor of management Studies (Pharmaceutical Management)	First	First Semester	134.4
	Second	Third Semester	126.1



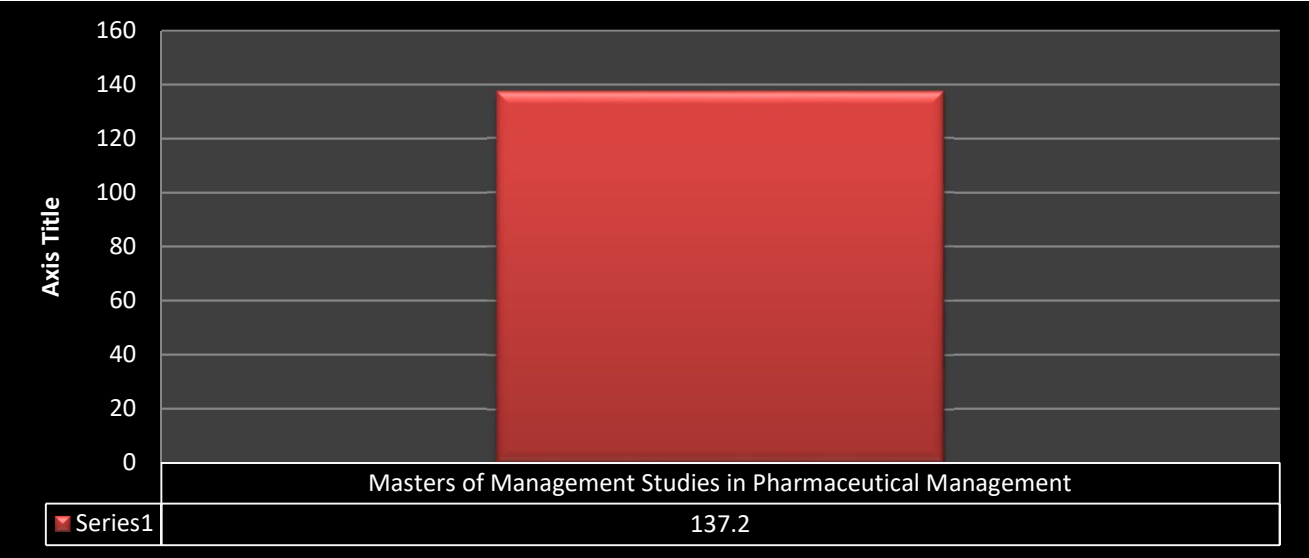
BBA in Hospital Management	First	First Semester	134.51
	Second	Third Semester	128.6
	Third	Fifth Semester	129.78



<b>Masters of Hospital Administration</b>	<b>First</b>	<b>First Semester</b>	<b>139</b>
	<b>Second</b>	<b>Third Semester</b>	<b>132.4</b>



<b>Masters of Management Studies in Pharmaceutical Management</b>	<b>First</b>	<b>137.2</b>
---	--------------	--------------



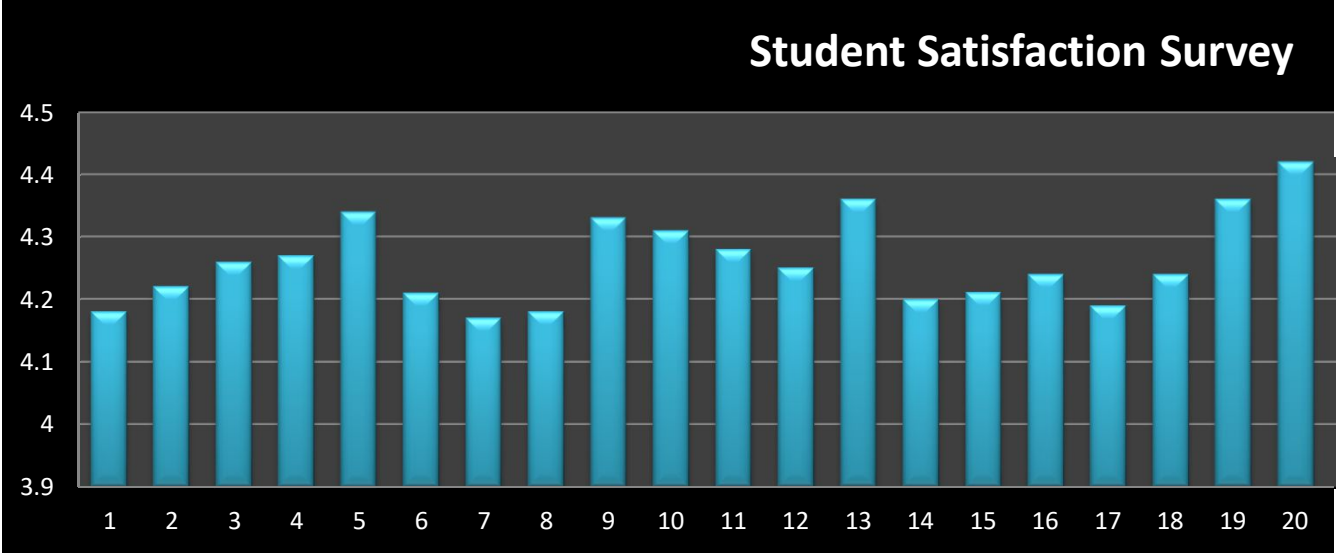




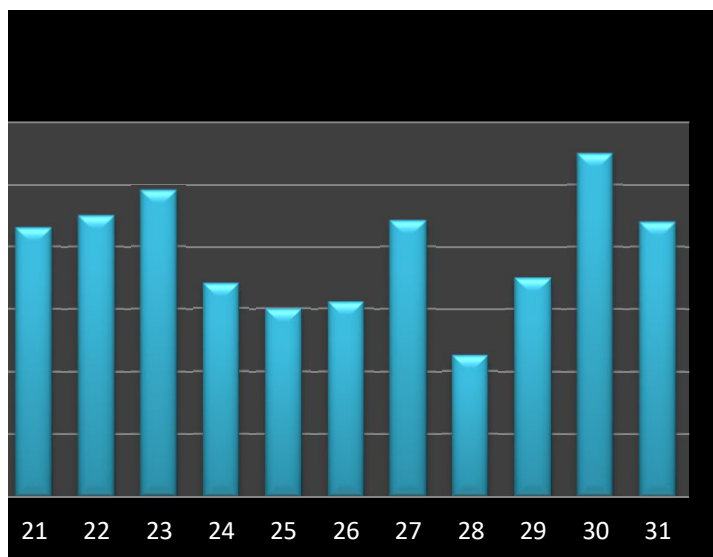




Q1	Q2	Q3	Q4	Q5	Q6	Q7	Q8	Q9	Q10
4.18	4.22	4.26	4.27	4.34	4.21	4.17	4.18	4.33	4.31



Q11	Q12	Q13	Q14	Q15	Q16	Q17	Q18	Q19	Q20
4.28	4.25	4.36	4.2	4.211	4.24	4.19	4.24	4.36	4.42



Q21	Q22	Q23	Q24	Q25	Q26	Q27	Q28	Q29	Q30
4.33	4.35	4.39	4.24	4.2	4.211	4.342	4.125	4.25	4.45

Q31  
4.34